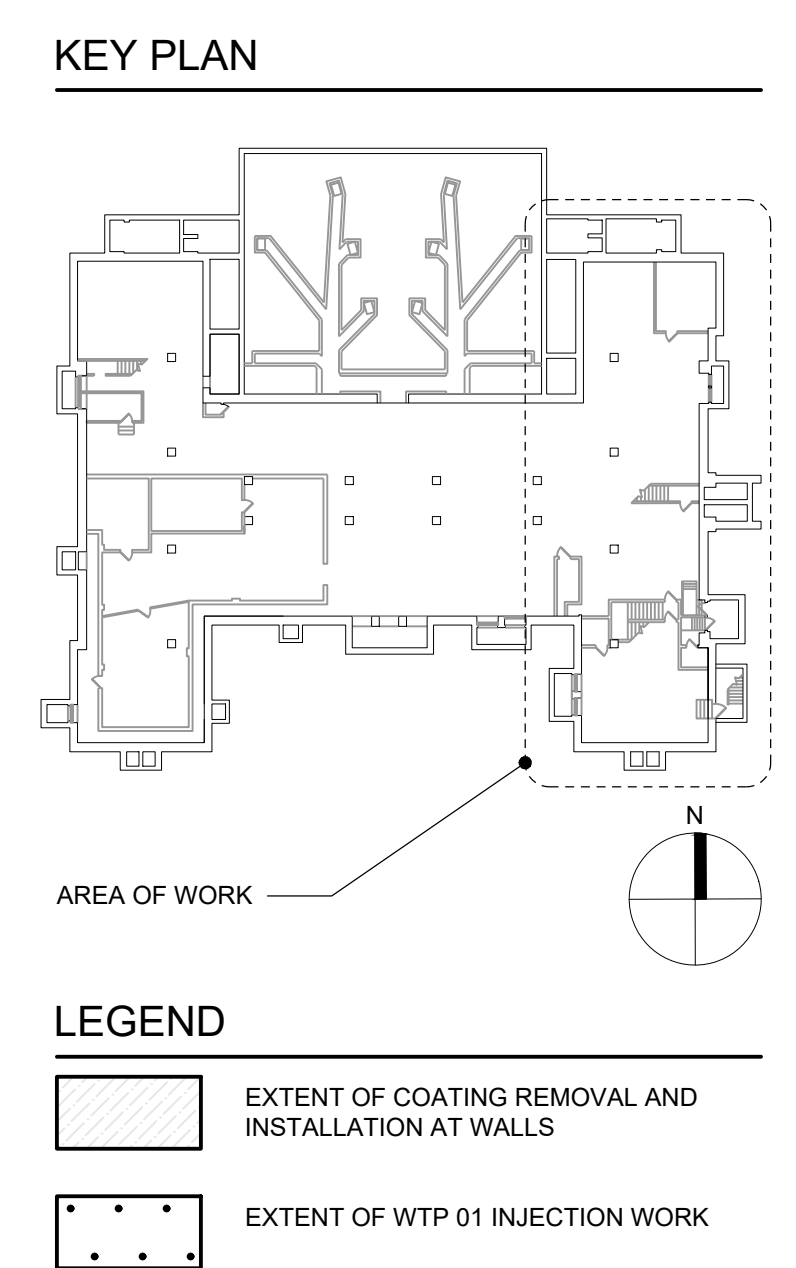
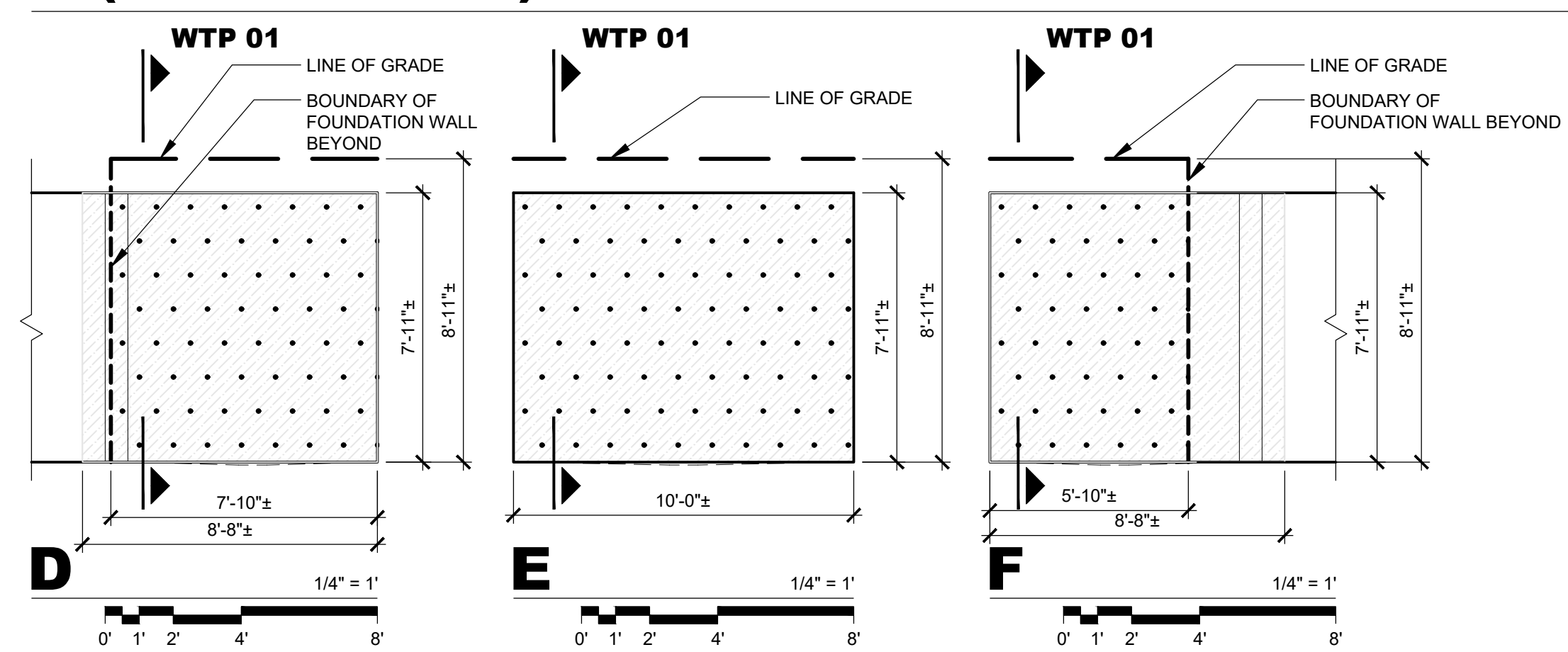
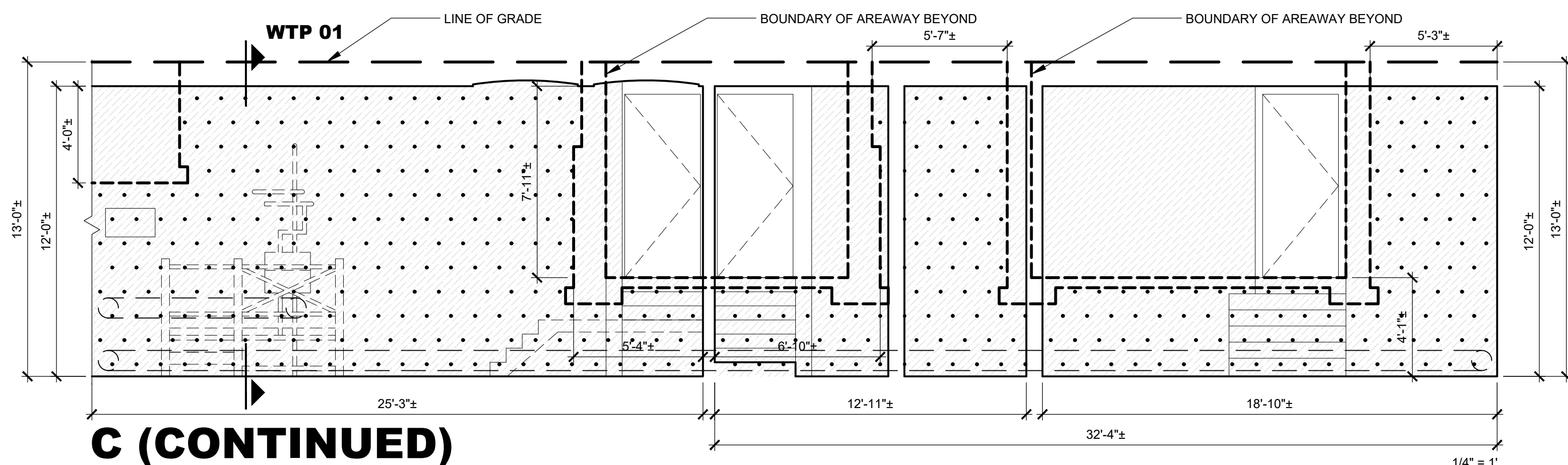
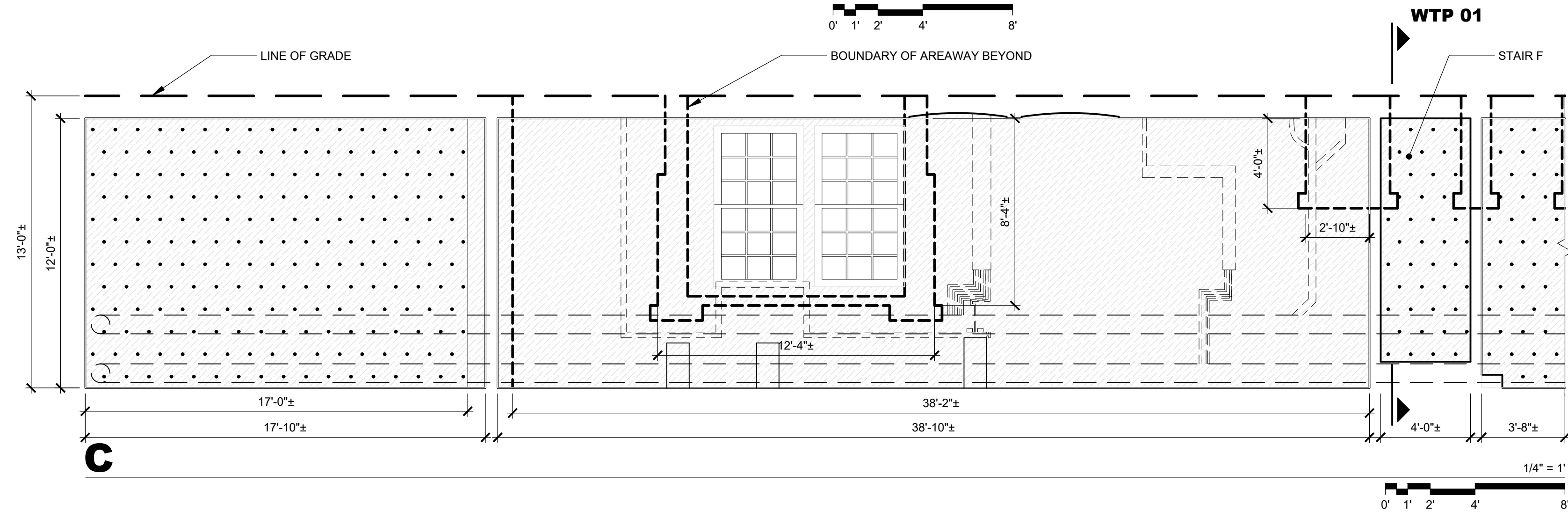
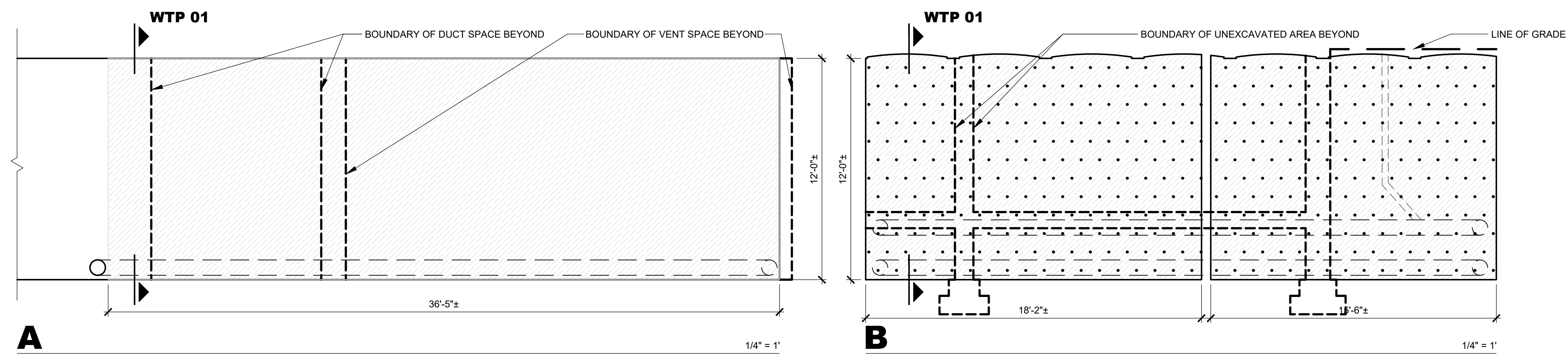


03
CELLAR PARTIAL PLAN 4



President & CEO
Lorraine Grillo

Board of Trustees
Chancellor Richard A. Carranza, Chairman
Curtis A. Harris
Emily A. Youssouf

Architecture & Engineering

E. Bruce Barrett, R.A. LEED A.P., Vice President
Elan R. Abneri, P.E., Senior Director, Design Consultant Management
Stanley Dahir, R.A., Sr. Director, Quality Control & Construction Support
Maria A. Gómez, P.E., LEED A.P., Senior Director, A&E In-House Design
George D. Roussey, P.E., LEED A.P., Director, Technical Standards
Stacey Spann-Thom, Director, Operations Support

Consultants:

32 AVENUE OF THE AMERICAS
NEW YORK, NY 10013
TEL 212 505 1133
FAX 212 505 1728

NOTE: Drawing may be printed at reduced scale

IT IS A VIOLATION OF THE STATE EDUCATION LAW SECTION 7209 (2) FOR ANY PERSON TO ALTER AN ITEM IN ANY WAY UNLESS SUCH PERSON IS ACTING UNDER THE DIRECTION OF A LICENSED PROFESSIONAL ENGINEER, AND THE ENGINEER STAMPS SUCH CHANGES

No.	Date	Revision

SCA Design Manager: WILLIAM DONG		
Project Architect/Engineer: DAVID MAY, RA		
Discipline Lead: JOHN GALETTA, RA		
Designer: ANNA KEDRINA		
Drawn by: LUKE KREUL/ALEX SHUEY		
Checked by: JOHN GRANDE, PE		
Design No: D018779	Facility Code: K158	Date: 05/13/2019

Project:
P.S. 158 - BROOKLYN
FLOOD ELIM., PARAPETS, WINDOWS,
PAVED AREAS, EXT. MASONRY, ROOFS

Address:
400 ASHFORD STREET
BROOKLYN, NY 11207

Drawing Title:
CELLAR
INTERIOR ELEVATIONS - 4

Reserved For
DOB NOW Job#

Drawing No: A704.00
Sheets in Contract Set: 54 of 90
Sheets in DOB Set: 46 of 73

FID Job#: 0220-19
Number of drawings submitted: 73
Date Certified: 05/22/2019
SUBMITTED WITH SELF-CERTIFICATION OF
OBJECTIONS as per Department of Buildings
Technical PPN # 1/01

C:\AutoCAD_Temp\Publish_250A\A704-A704-Cellar Interior Elevations - 1-4.dwg 05/16/19 - 12:27pm dleehin