

President & CEO
Lorraine Grillo

Board of Trustees
Chancellor Richard A. Carranza, Chairman
Curtis A. Harris
Emily A. Youssouf



Architecture & Engineering

E. Bruce Barrett, R.A. LEED A.P., Vice President
Elan R. Abneri, P.E., Senior Director, Design Consultant Management
Stanley Dahir, R.A., Director, Quality Control & Construction Support
María A. Gómez, P.E., LEED A.P., Senior Director, A&E In-House Design
George D. Roussey, P.E., LEED A.P., Director, Technical Standards
Stacey Spann-Thom, Director, Operations Support

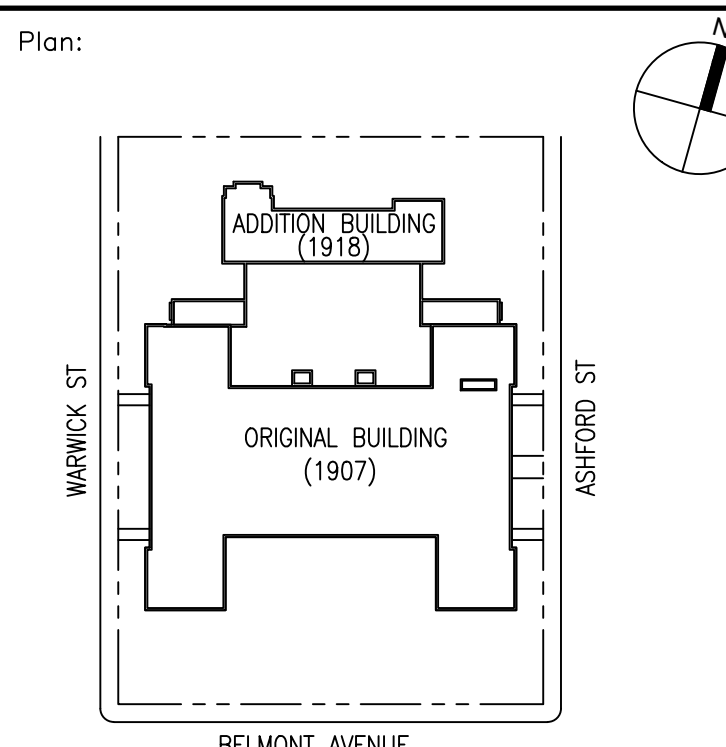
CONSULTANTS:



IT IS A VIOLATION OF THE STATE EDUCATION LAW SECTION 7209 (2) FOR ANY PERSON TO ALTER AN ITEM IN ANY WAY UNLESS SUCH PERSON IS ACTING UNDER THE DIRECTION OF A LICENSED PROFESSIONAL ENGINEER, AND THE ENGINEER STAMPS SUCH CHANGES

No.	Date	Revision

Key Plan:



Block # 4018 Lot # 01

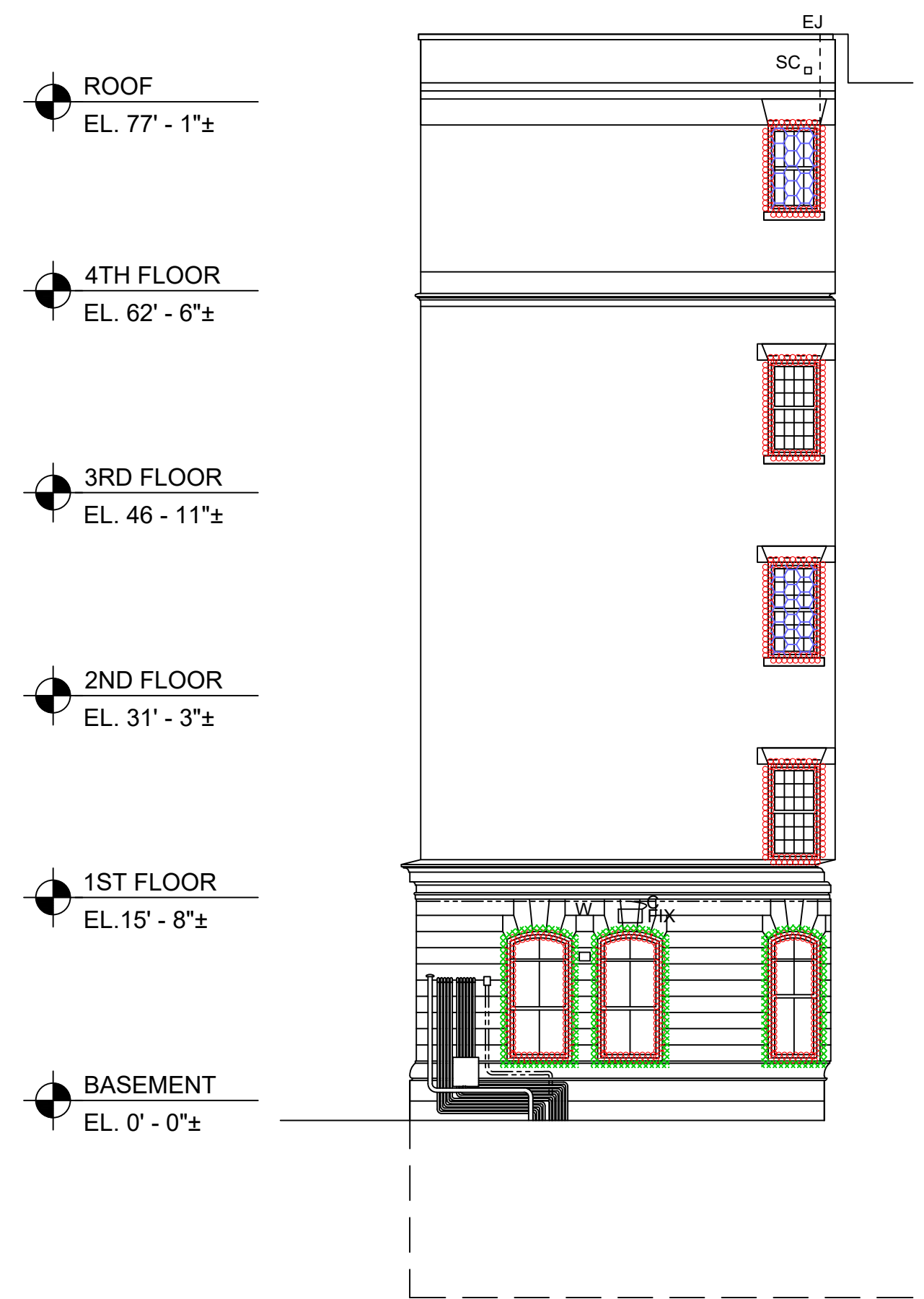
SCA Design Manager:	CLEVELAND MORRISON, PE	
Project Architect/Engineer:	DAVID MAY, RA	
Discipline Lead:	M. KAMMAS	AH 97-17055
Designer:	O. SELDINAS	AH 04-00336
Drawn by:	E. MILKIS	
Checked by:	M. KAMMAS	AH 97-17055
Design No.:	Facility Code:	Date:
D018779	K158	05/13/2019

Project:
P.S. 158 - BROOKLYN
FLOOD ELIM., PARAPETS, WINDOWS,
PAVED AREAS, EXT. MASONRY, ROOFS
Address:
400 ASHFORD STREET
BROOKLYN, NY 11207

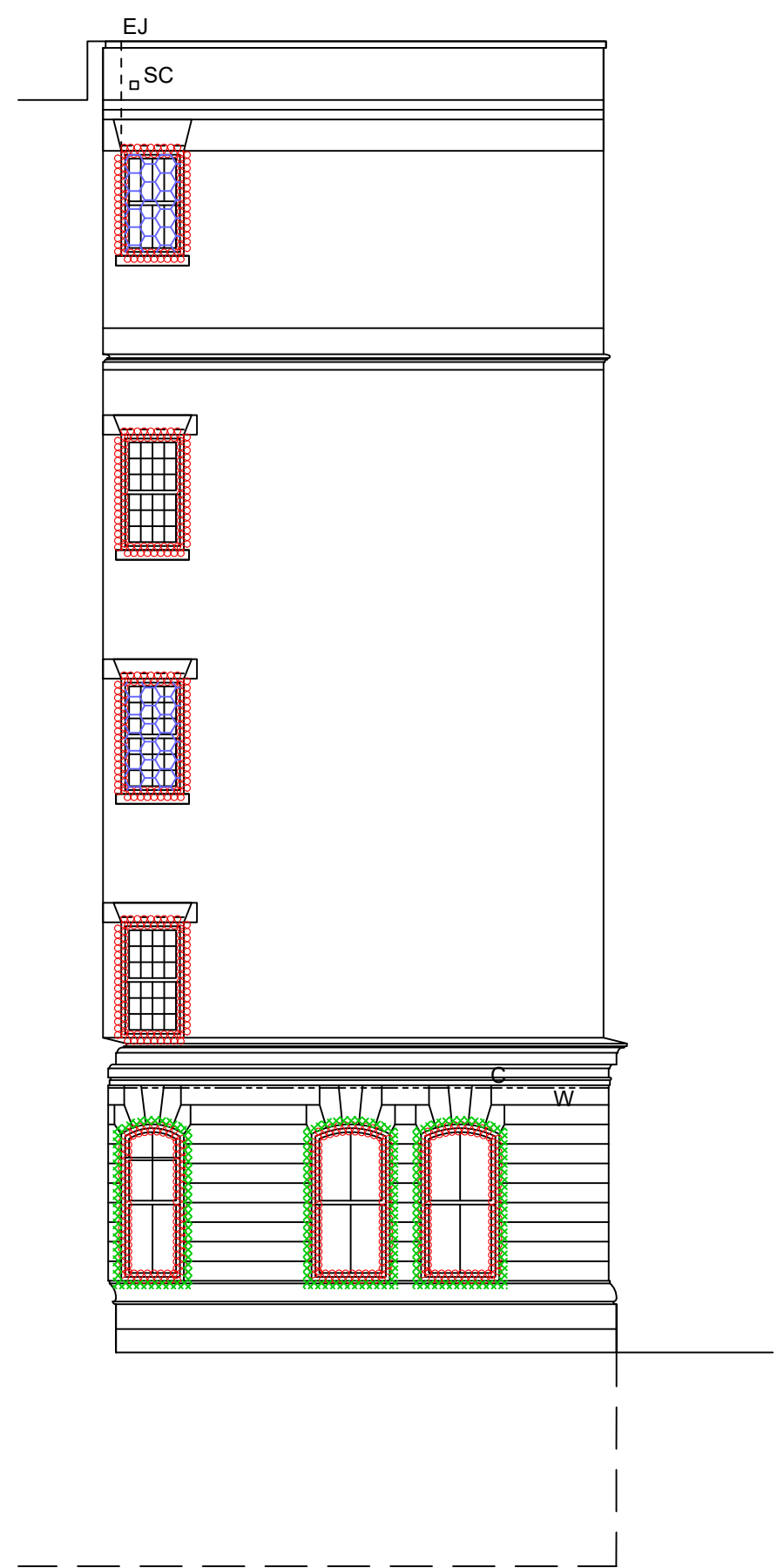
Drawing Title:
SOUTH ELEVATION
EAST AND WEST RETURNS
ASBESTOS ABATEMENT

Reserved For
DOB NOW Job#

Drawing No.:	H108.00
Sheets in Contract Set:	14 of 90
Sheets in DOB Set:	- of 73



1 SOUTH ELEVATION WEST RETURN ASBESTOS ABATEMENT
H108.00 NOT TO SCALE



2 SOUTH ELEVATION EAST RETURN ASBESTOS ABATEMENT
H108.00 NOT TO SCALE

NOTE:
REFER TO DRAWING H-101.00 FOR
ASBESTOS NOTES AND LEGEND

L:\5900es\5906R01 (PS 158K_Flood-Parapet-Windows)img\02 CONTRACT DOCUMENTS\WP Drawings (dwg)\PS 158K_Flood-Parapet-Windows.dwg 05/16/19 - 12:03pm alexfina